

# A

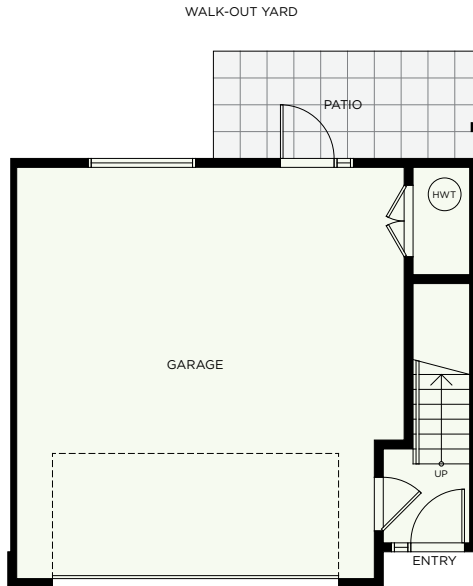
## 3 BEDROOM 2.5 BATH

**INTERIOR** 1,477 SF  
**DECK** 89.5 SF  
**TOTAL** 1,566.5 SF  
**GARAGE** 521 SF

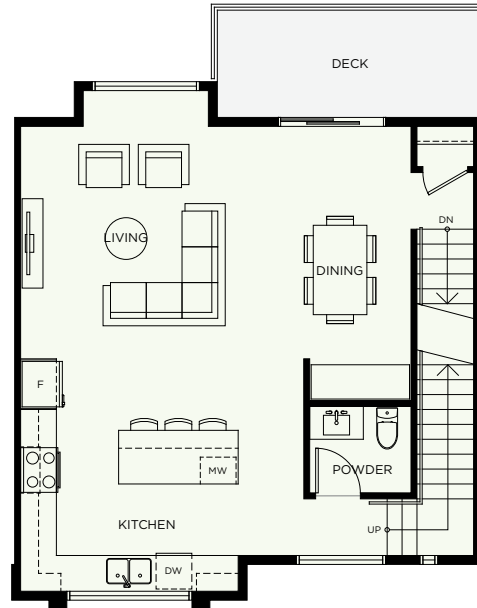


### ELWYNN GREEN

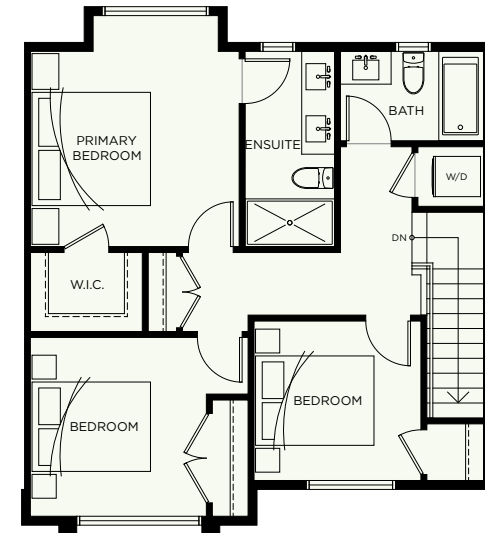
FLEETWOOD



LOWER LEVEL



MAIN LEVEL



UPPER LEVEL



# A1

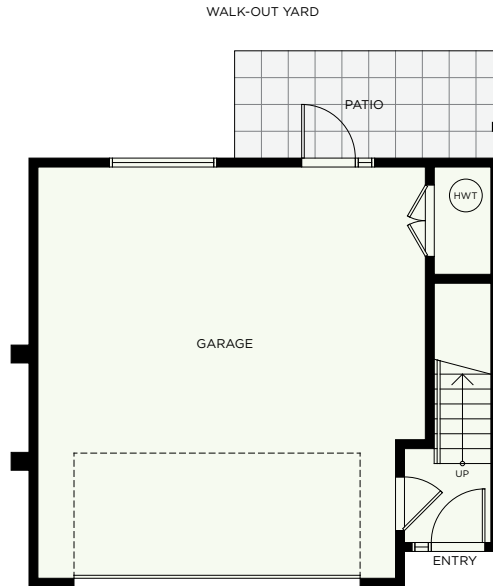
**3 BEDROOM**  
**2.5 BATH**

**INTERIOR** 1,485 SF  
**DECK** 89.5 SF  
**TOTAL** 1,574.5 SF  
**GARAGE** 525 SF

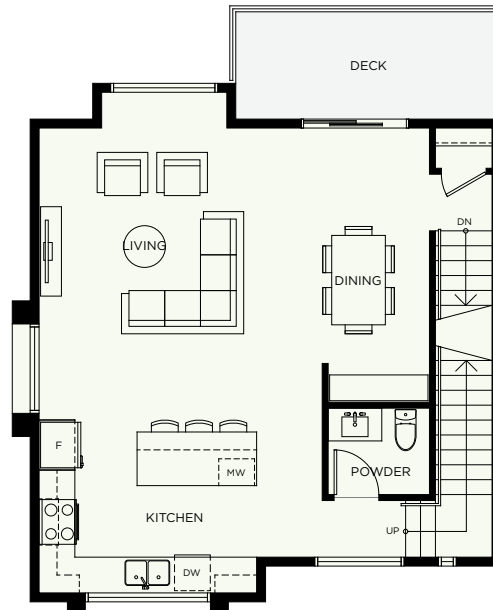


**ELWYNN GREEN**

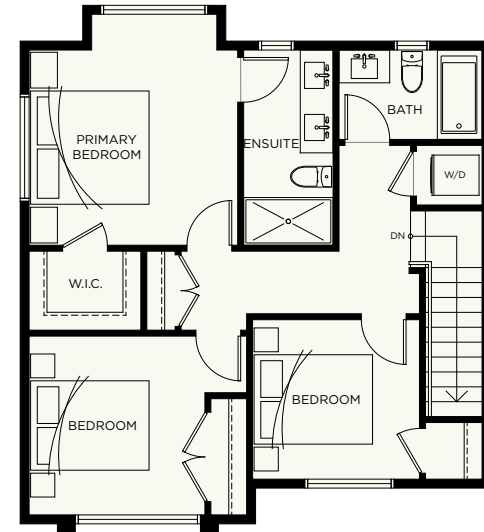
**FLEETWOOD**



**LOWER LEVEL**



**MAIN LEVEL**



**UPPER LEVEL**



# A2

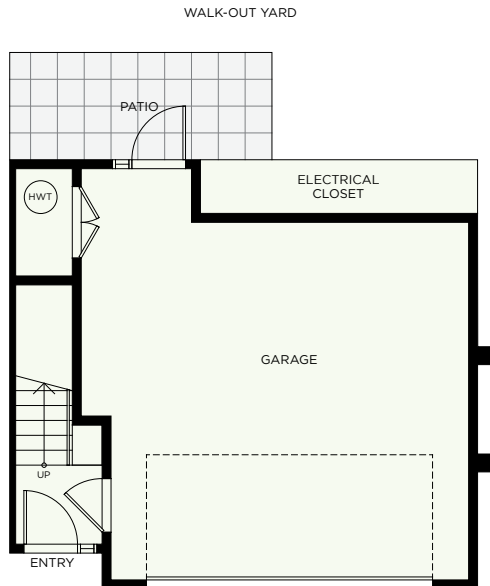
**3 BEDROOM**  
**2.5 BATH**

**INTERIOR** 1,487 SF  
**DECK** 88 SF  
**TOTAL** 1,575 SF  
**GARAGE** 476 SF

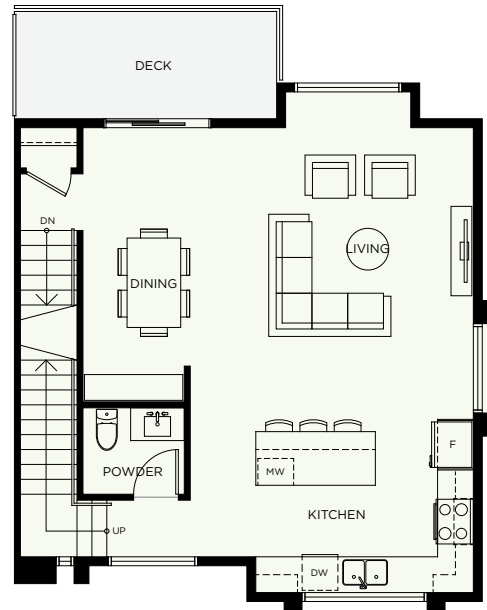


**ELWYNN GREEN**

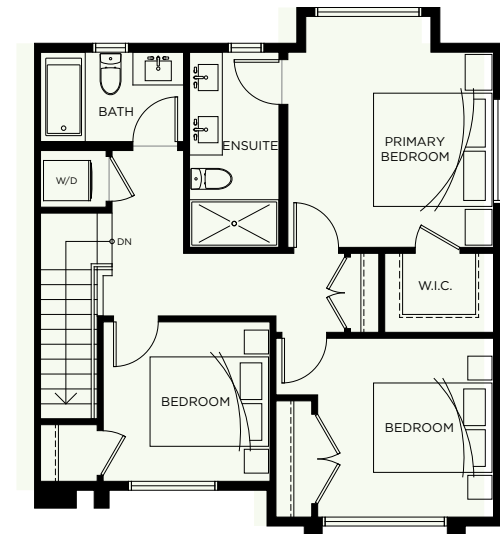
FLEETWOOD



**LOWER LEVEL**



**MAIN LEVEL**



**UPPER LEVEL**



# A3

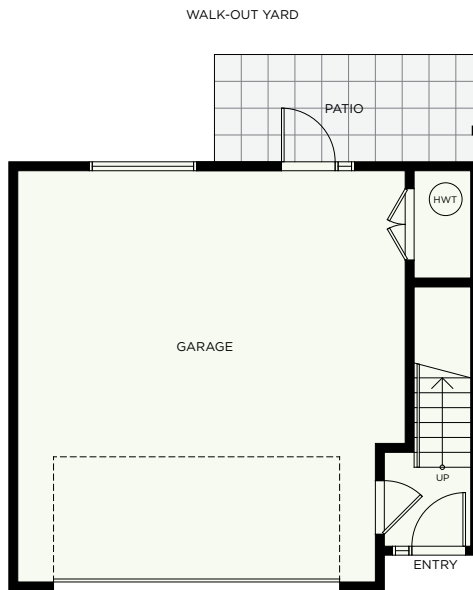
**3 BEDROOM**  
**2.5 BATH**

**INTERIOR** 1,477 SF  
**DECK** 88 SF  
**TOTAL** 1,565 SF  
**GARAGE** 525 SF

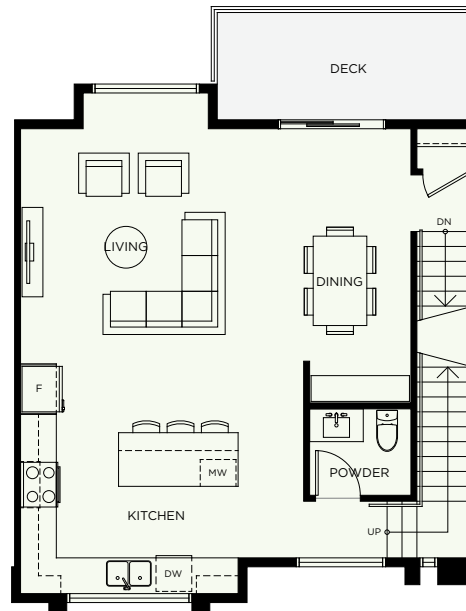


**ELWYNN GREEN**

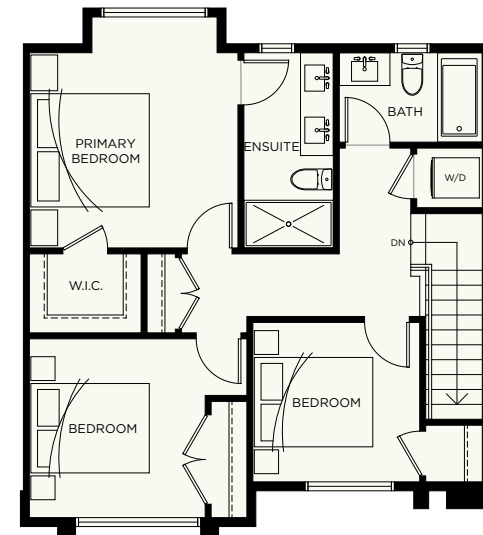
FLEETWOOD



**LOWER LEVEL**



**MAIN LEVEL**



**UPPER LEVEL**



# A4

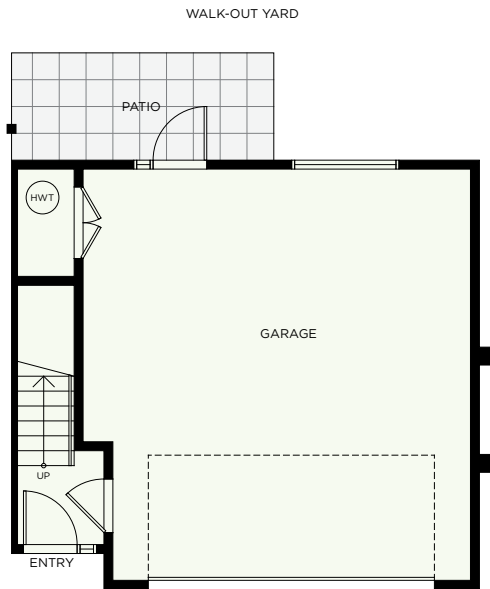
**3 BEDROOM**  
**2.5 BATH**

**INTERIOR** 1,485 SF  
**DECK** 88 SF  
**TOTAL** 1,573 SF  
**GARAGE** 525 SF

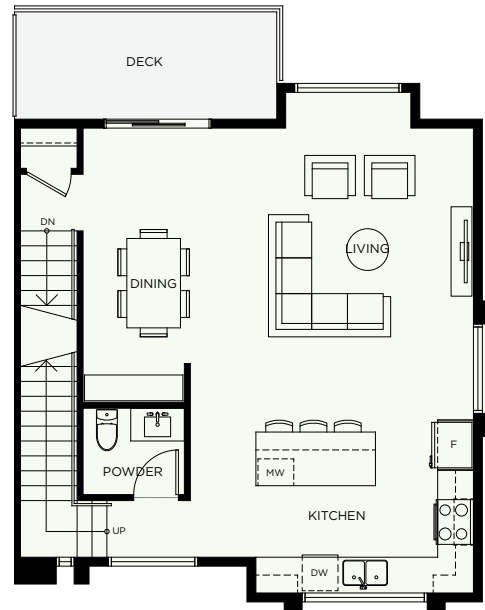


**ELWYNN GREEN**

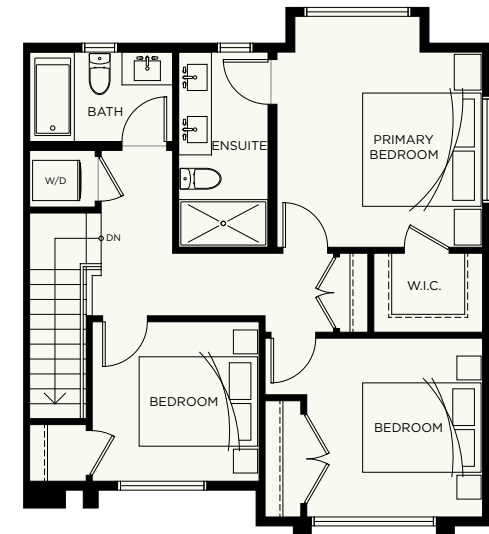
FLEETWOOD



**LOWER LEVEL**



**MAIN LEVEL**



**UPPER LEVEL**



# A5

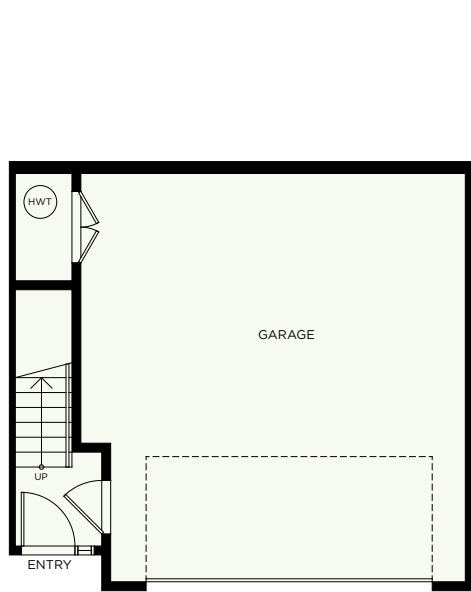
**3 BEDROOM**  
**2.5 BATH**

**INTERIOR 1,485 SF**  
**GARAGE 525 SF**

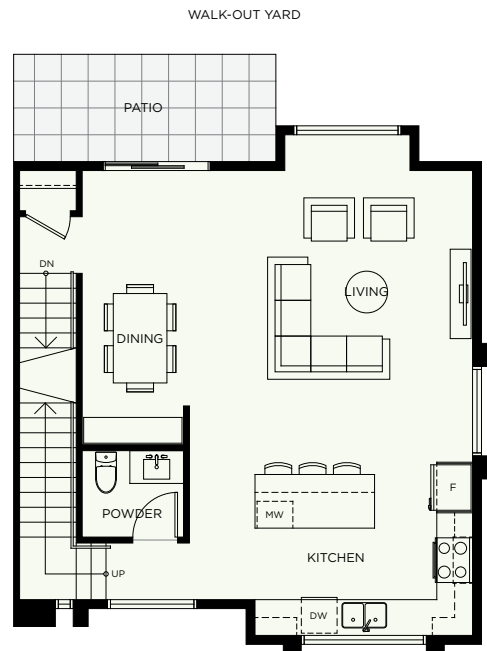


## ELWYNN GREEN

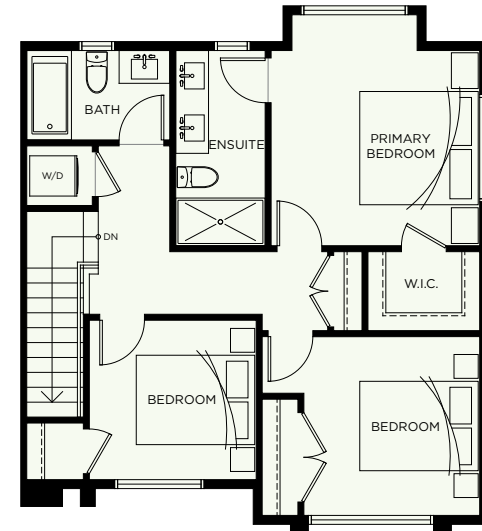
FLEETWOOD



**LOWER LEVEL**



**MAIN LEVEL**



**UPPER LEVEL**



# A6

**3 BEDROOM**  
**2.5 BATH**

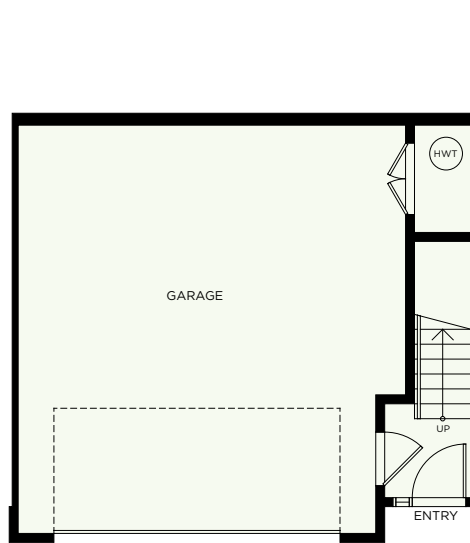
**INTERIOR 1,477 SF**  
**GARAGE 521 SF**



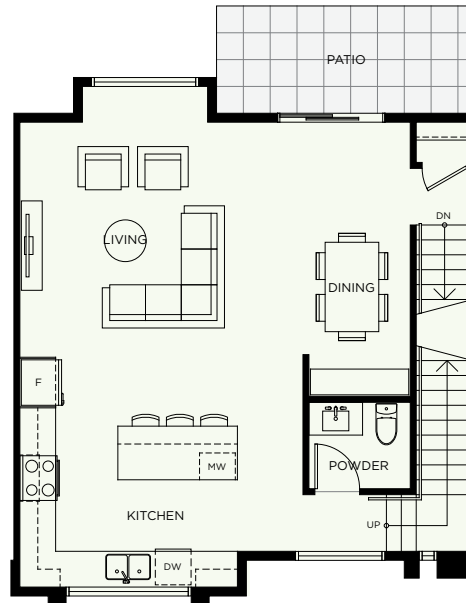
**ELWYNN GREEN**

**FLEETWOOD**

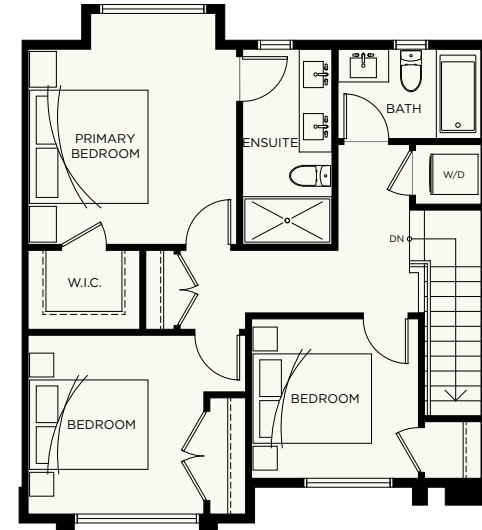
WALK-OUT YARD



**LOWER LEVEL**



**MAIN LEVEL**



**UPPER LEVEL**



# A7

**3 BEDROOM**  
**2.5 BATH**

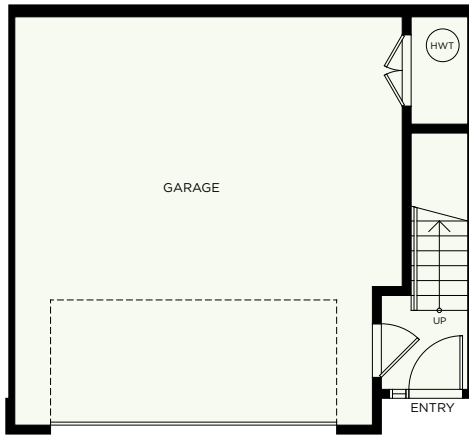
**INTERIOR 1,477 SF**  
**GARAGE 521 SF**



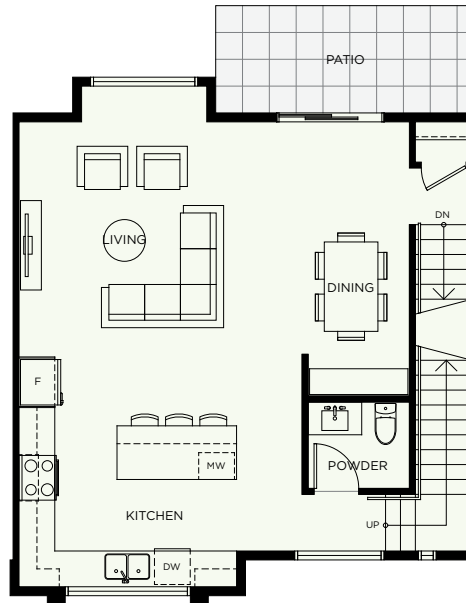
## ELWYNN GREEN

FLEETWOOD

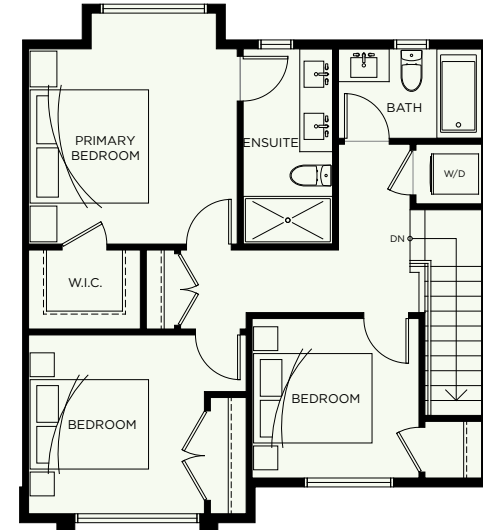
WALK-OUT YARD



**LOWER LEVEL**



**MAIN LEVEL**



**UPPER LEVEL**





# A8

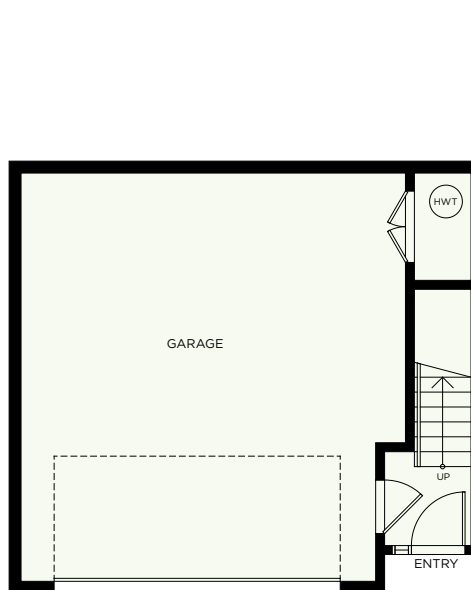
**3 BEDROOM**  
**2.5 BATH**

**INTERIOR 1,485 SF**  
**GARAGE 525 SF**



**ELWYNN GREEN**

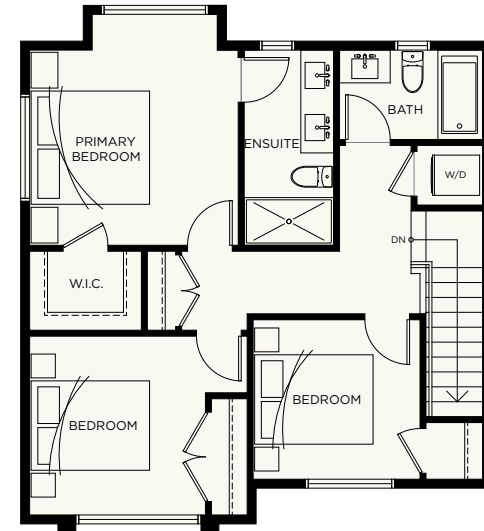
**FLEETWOOD**



**LOWER LEVEL**



**MAIN LEVEL**



**UPPER LEVEL**



# B

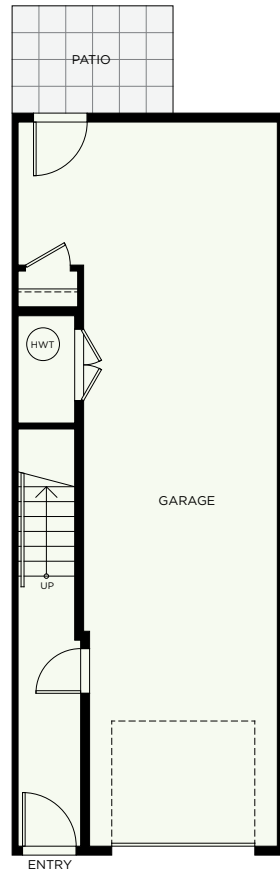
**3 BEDROOM**  
**2.5 BATH**

**INTERIOR** 1,426 SF  
**DECK** 55.8 SF  
**TOTAL** 1,481.8 SF  
**GARAGE** 502 SF

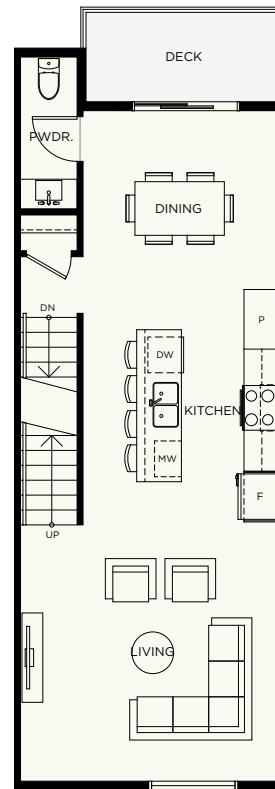


**ELWYNN GREEN**

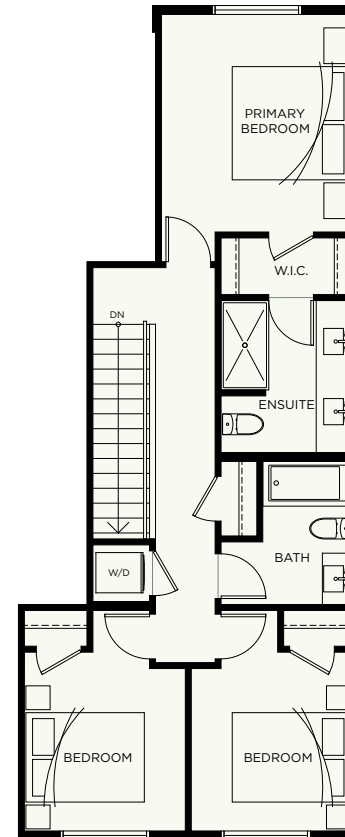
FLEETWOOD



**LOWER LEVEL**



**MAIN LEVEL**



**UPPER LEVEL**



# B1

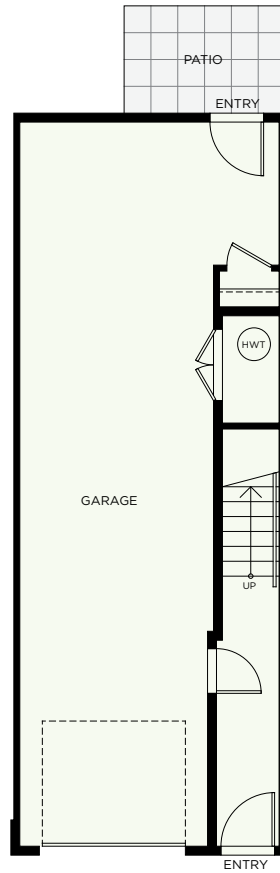
**3 BEDROOM**  
**2.5 BATH**

**INTERIOR** 1,424 SF  
**DECK** 55.8 SF  
**TOTAL** 1,479.8 SF  
**GARAGE** 502 SF

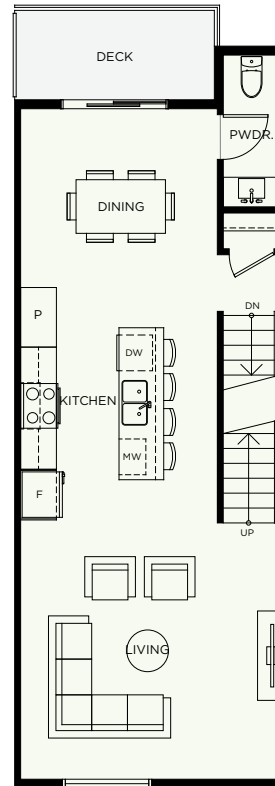


**ELWYNN GREEN**

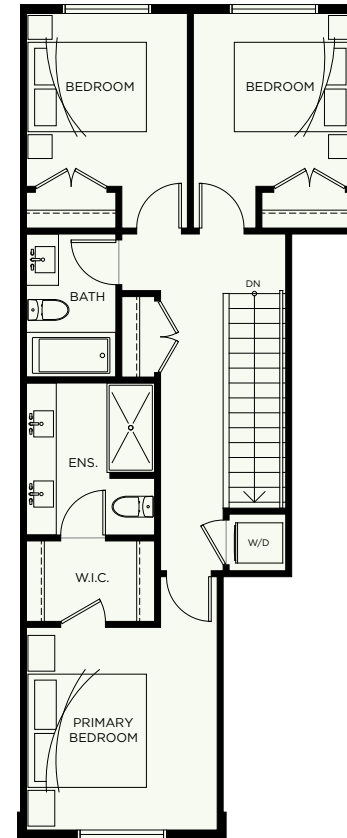
FLEETWOOD



**LOWER LEVEL**



**MAIN LEVEL**



**UPPER LEVEL**



# B3

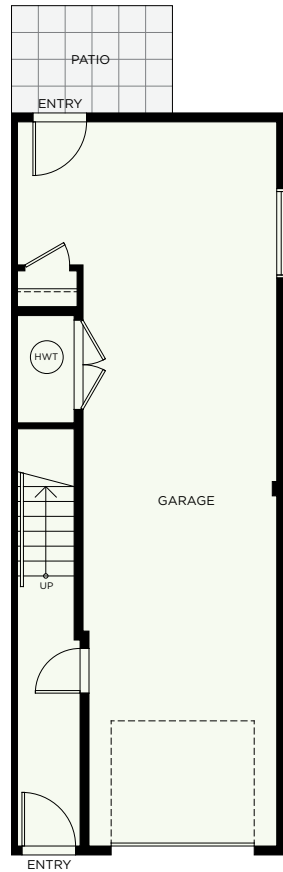
**3 BEDROOM**  
**2.5 BATH**

**INTERIOR 1,512 SF**  
**DECK 66.6 SF**  
**TOTAL 1,578.6 SF**  
**GARAGE 509 SF**

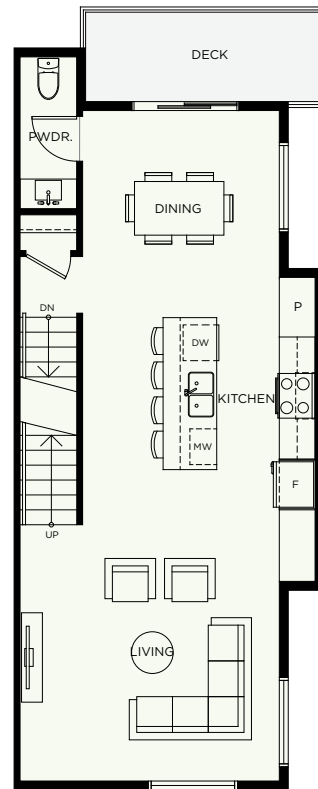


**ELWYNN GREEN**

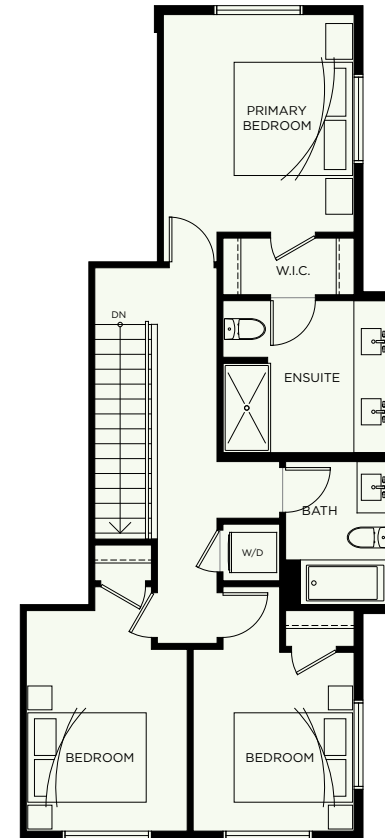
**FLEETWOOD**



**LOWER LEVEL**



**MAIN LEVEL**



**UPPER LEVEL**



# B4

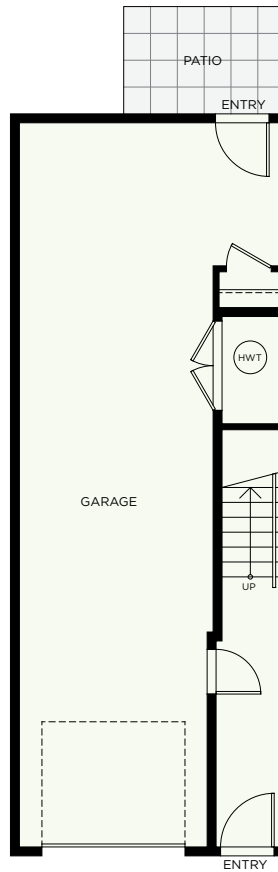
**3 BEDROOM**  
**2.5 BATH**

**INTERIOR** 1,510 SF  
**DECK** 66.6 SF  
**TOTAL** 1,576.6 SF  
**GARAGE** 509 SF

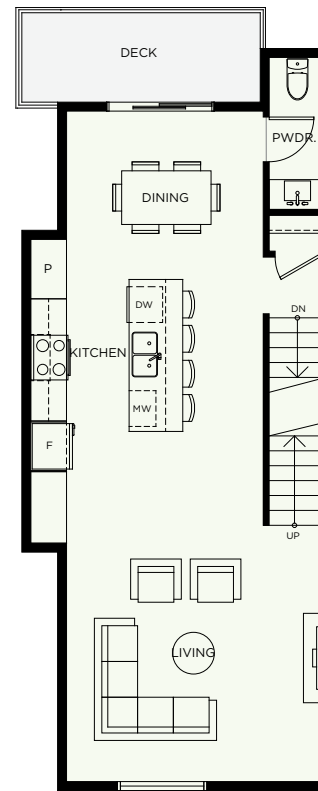


**ELWYNN GREEN**

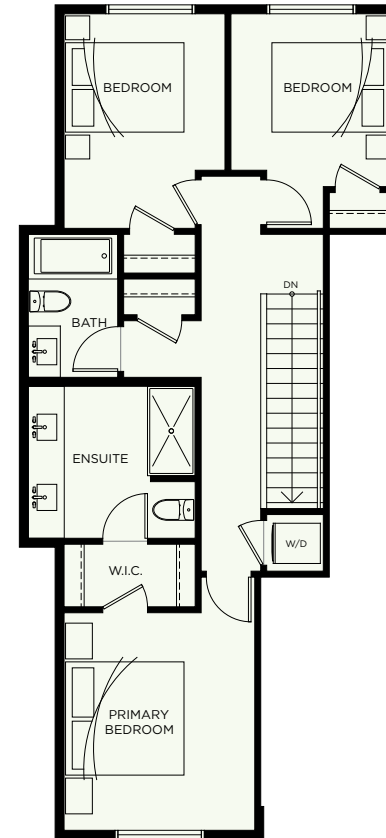
FLEETWOOD



**LOWER LEVEL**



**MAIN LEVEL**



**UPPER LEVEL**



# B5

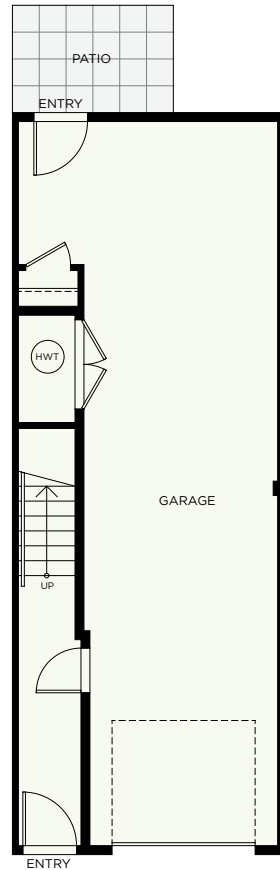
**3 BEDROOM**  
**2.5 BATH**

**INTERIOR** 1,512 SF  
**DECK** 66.6 SF  
**TOTAL** 1,578.6 SF  
**GARAGE** 509 SF

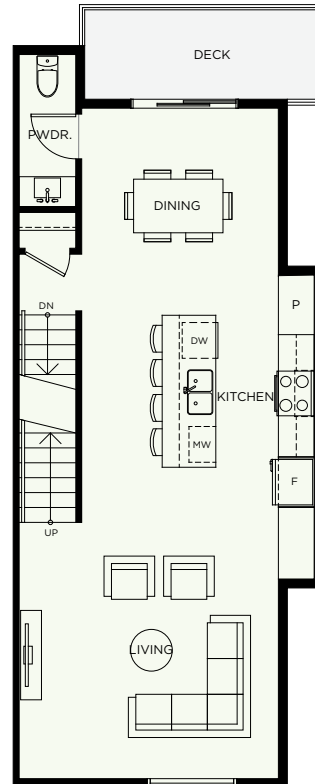


**ELWYNN GREEN**

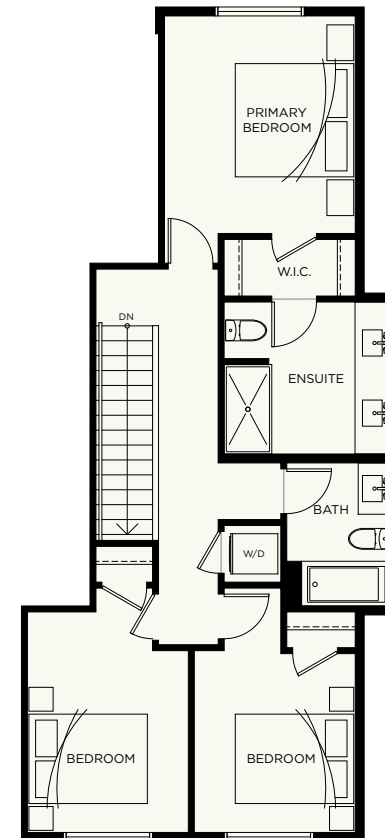
FLEETWOOD



**LOWER LEVEL**



**MAIN LEVEL**



**UPPER LEVEL**



# D

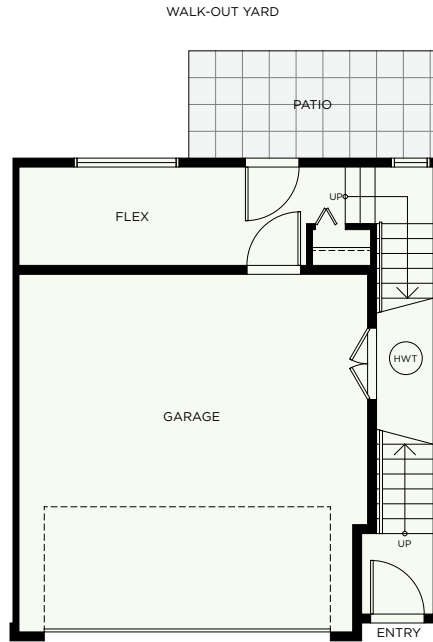
## 3 BEDROOM + FLEX 2.5 BATH

**INTERIOR** 1,624 SF  
**DECK** 64 SF  
**TOTAL** 1,688 SF  
**GARAGE** 412 SF

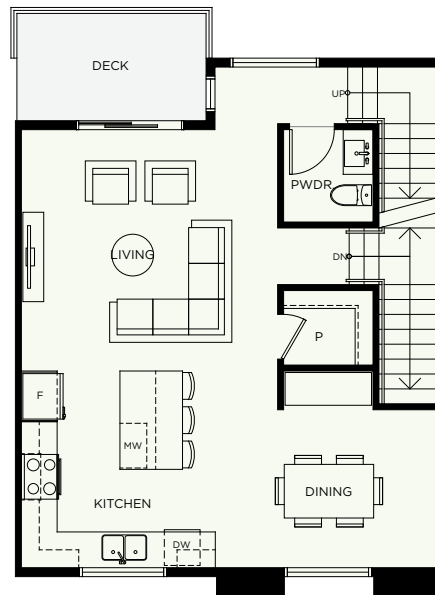


### ELWYNN GREEN

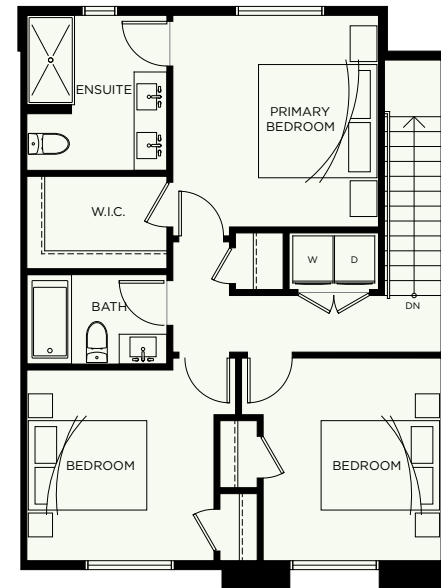
FLEETWOOD



LOWER LEVEL



MAIN LEVEL



UPPER LEVEL



# D1

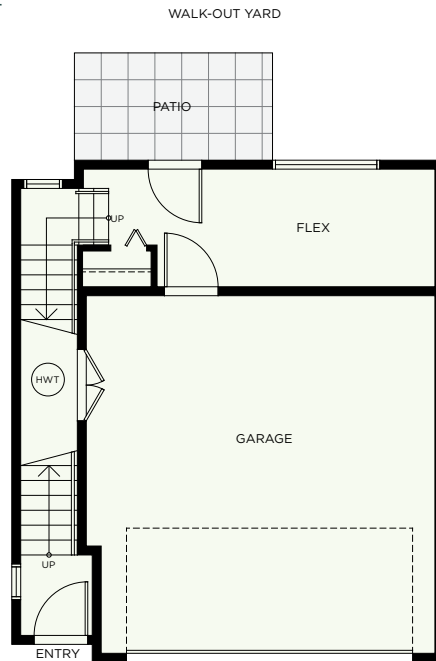
## 3 BEDROOM + BASEMENT FLEX 2.5 BATH

**INTERIOR** 1,669 SF  
**DECK** 60.4 SF  
**TOTAL** 1,729.4 SF  
**GARAGE** 411 SF



### ELWYNN GREEN

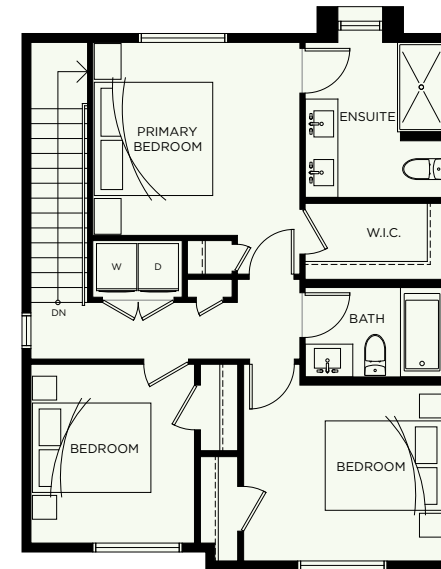
FLEETWOOD



LOWER LEVEL



MAIN LEVEL



UPPER LEVEL





# D2

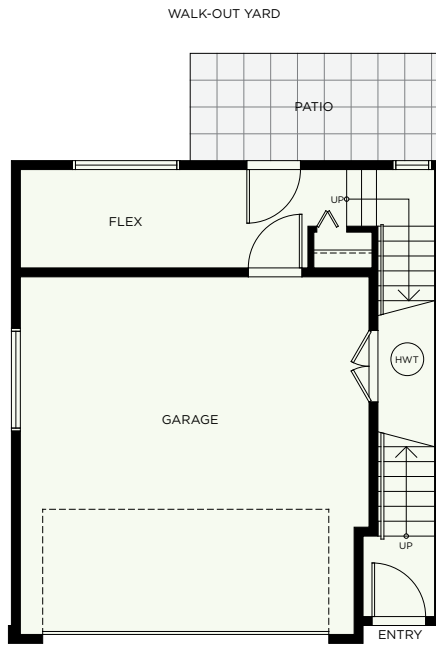
**3 BEDROOM + FLEX**  
**2.5 BATH**

**INTERIOR** 1,686 SF  
**DECK** 85 SF  
**TOTAL** 1,771 SF  
**GARAGE** 415 SF

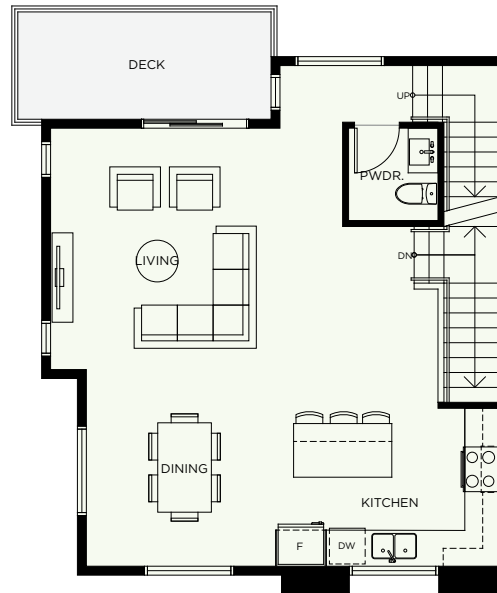


**ELWYNN GREEN**

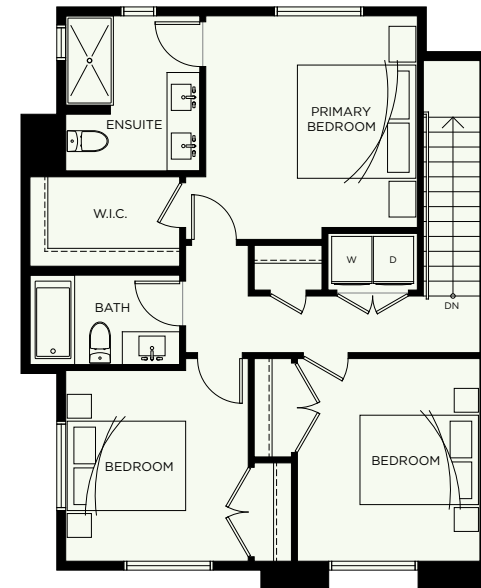
FLEETWOOD



LOWER LEVEL



MAIN LEVEL



UPPER LEVEL



# D3

**3 BEDROOM**  
**2.5 BATH**

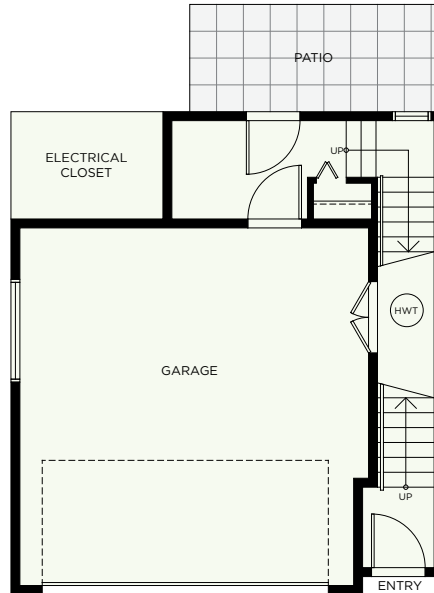
**INTERIOR** 1,633 SF  
**DECK** 85 SF  
**TOTAL** 1,718 SF  
**GARAGE** 415 SF



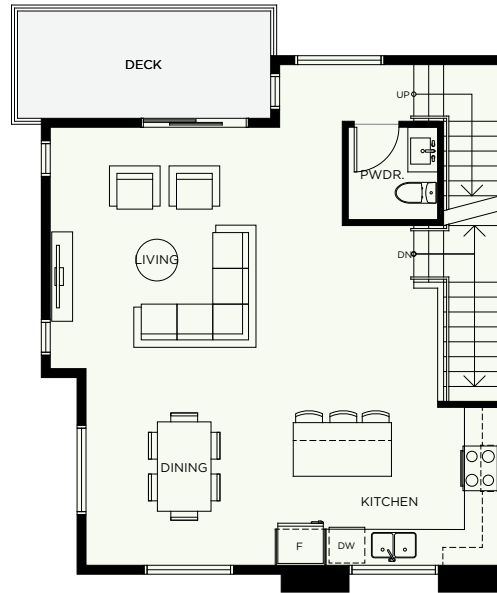
**ELWYNN GREEN**

**FLEETWOOD**

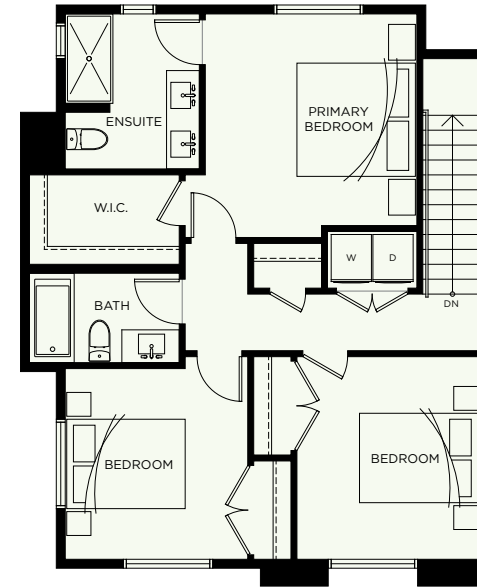
WALK-OUT YARD



**LOWER LEVEL**



**MAIN LEVEL**



**UPPER LEVEL**



# D5

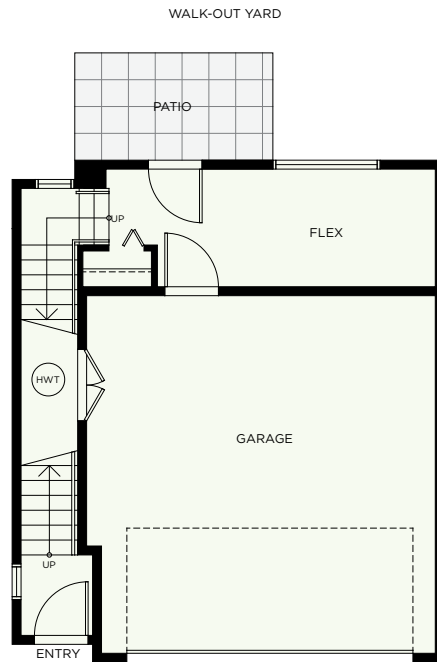
**3 BEDROOM + DEN**  
**2.5 BATH**

**INTERIOR 1,709 SF**  
**DECK 65 SF**  
**TOTAL 1,774 SF**  
**GARAGE 415 SF**

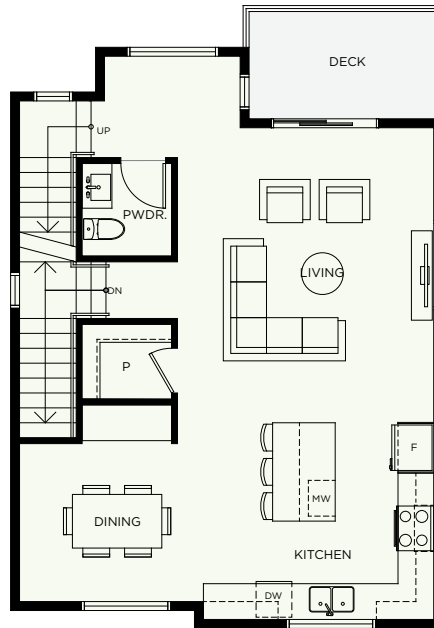


**ELWYNN GREEN**

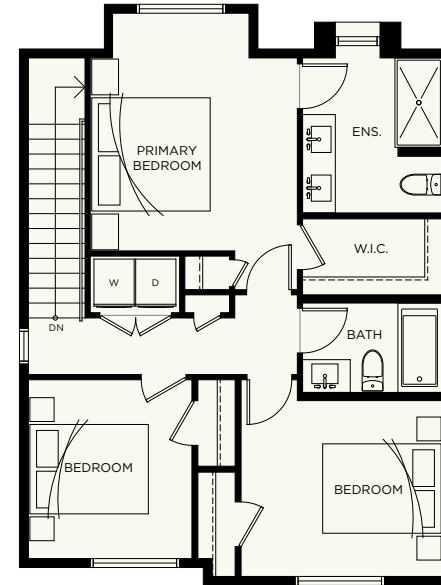
FLEETWOOD



**LOWER LEVEL**



**MAIN LEVEL**



**UPPER LEVEL**



# E

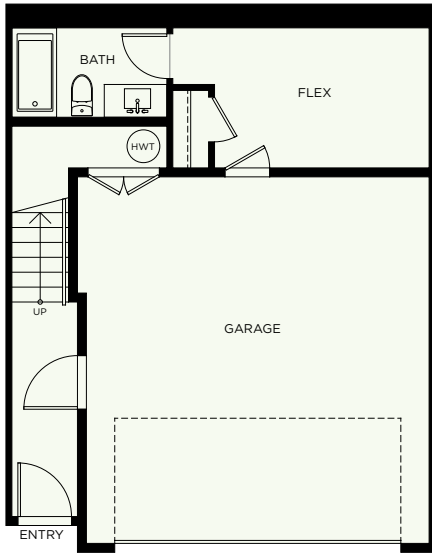
## 3 BEDROOM + FLEX 3.5 BATH

**INTERIOR** 1,964 SF  
**ROOFTOP** 145 SF  
**TOTAL** 2,109 SF  
**GARAGE** 423 SF

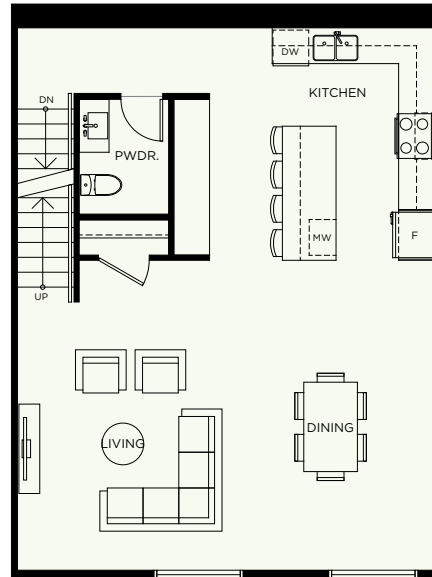


### ELWYNN GREEN

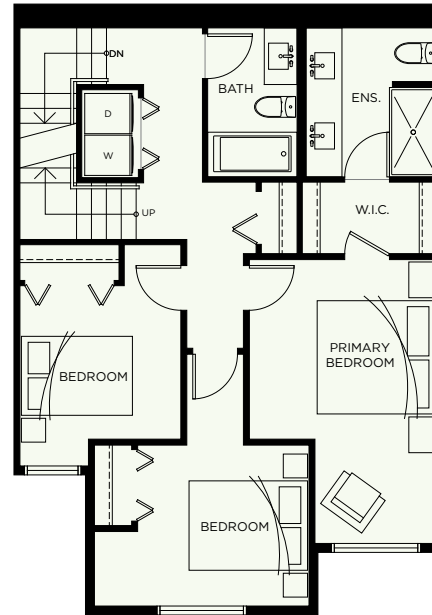
FLEETWOOD



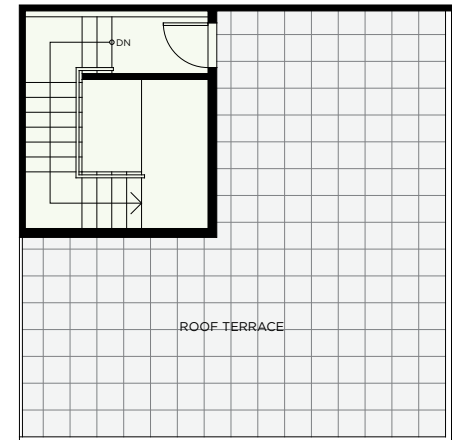
LOWER LEVEL



MAIN LEVEL



UPPER LEVEL



ROOF DECK LEVEL



# E1

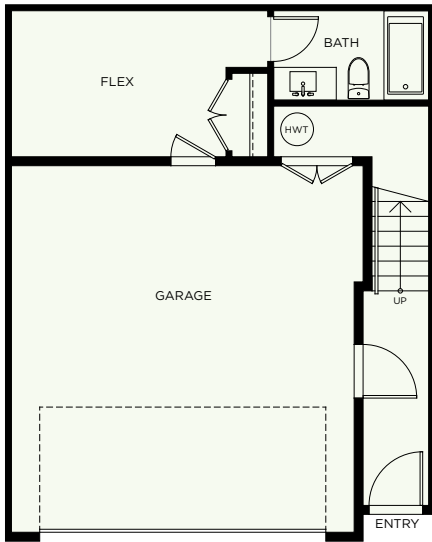
**3 BEDROOM + FLEX**  
**3.5 BATH**

**INTERIOR** 1,983 SF  
**ROOFTOP** 141 SF  
**TOTAL** 2,124 SF  
**GARAGE** 423 SF

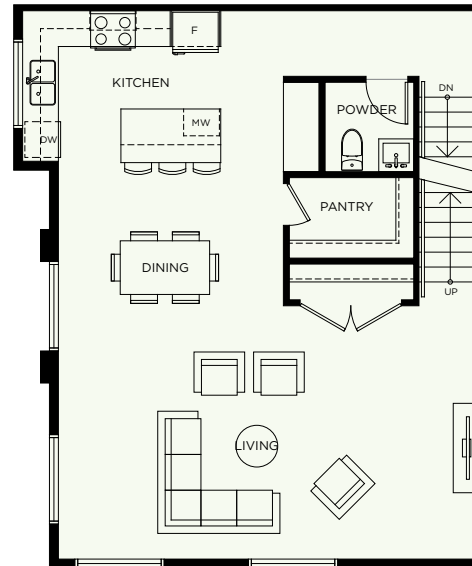


**ELWYNN GREEN**

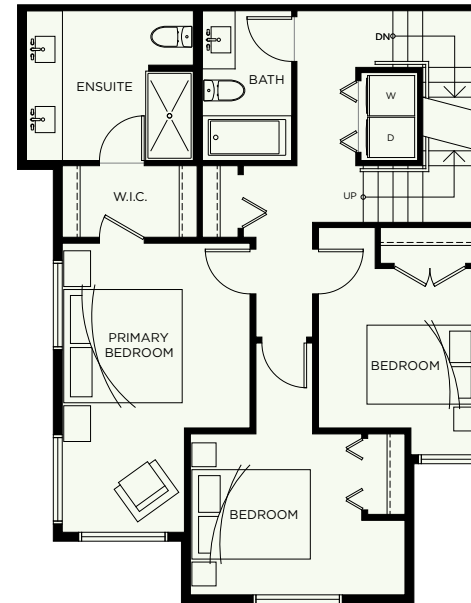
FLEETWOOD



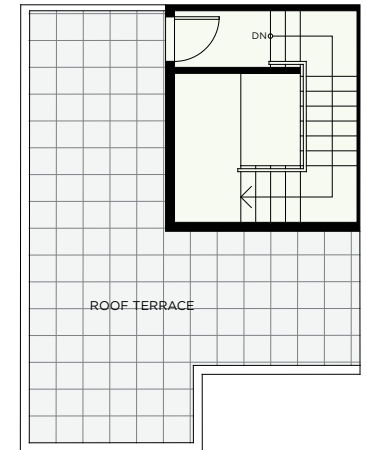
LOWER LEVEL



MAIN LEVEL



UPPER LEVEL



ROOF DECK LEVEL



# E3

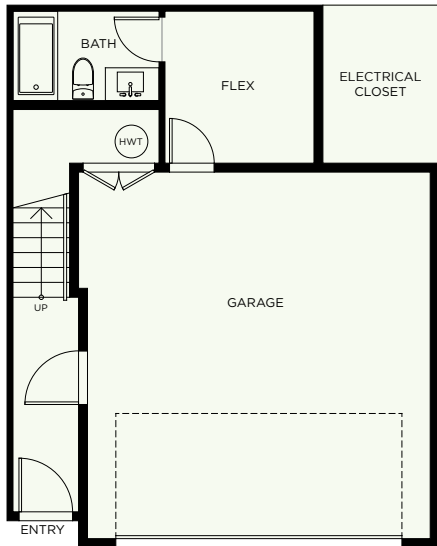
**3 BEDROOM + FLEX**  
**3.5 BATH**

**INTERIOR** 1,949 SF  
**ROOFTOP** 145 SF  
**TOTAL** 2,094 SF  
**GARAGE** 427 SF

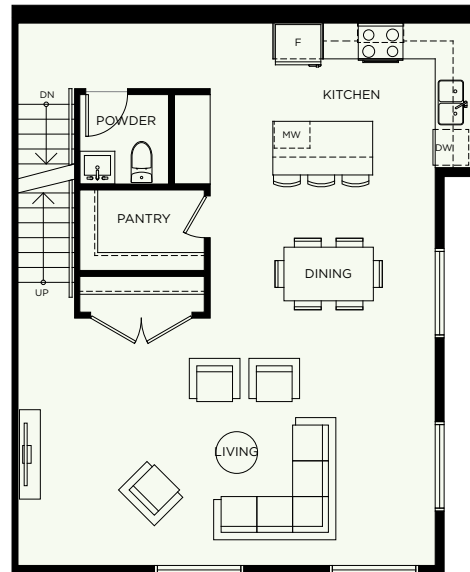


**ELWYNN GREEN**

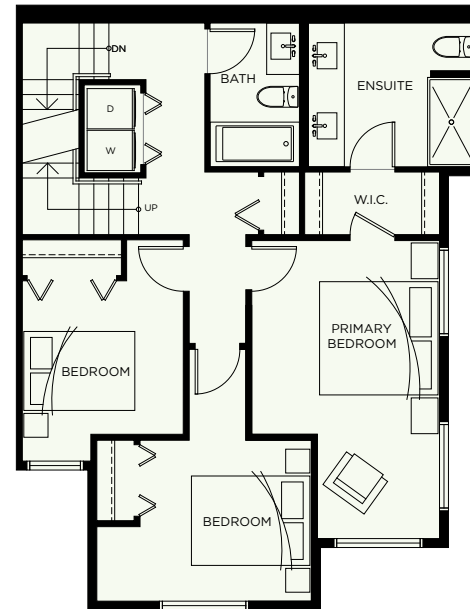
FLEETWOOD



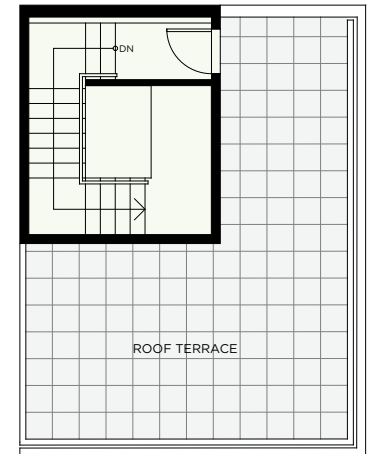
**LOWER LEVEL**



**MAIN LEVEL**



**UPPER LEVEL**



**ROOF DECK LEVEL**



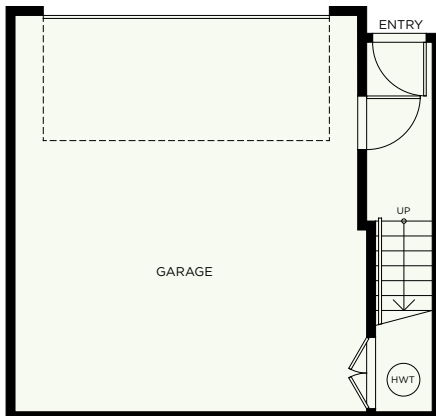
# E5

**3 BEDROOM**  
**2.5 BATH**

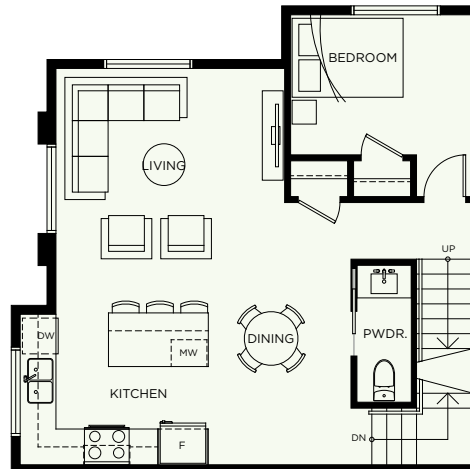
**INTERIOR** 1,467 SF  
**ROOFTOP** 139 SF  
**TOTAL** 1,606 SF  
**GARAGE** 463 SF



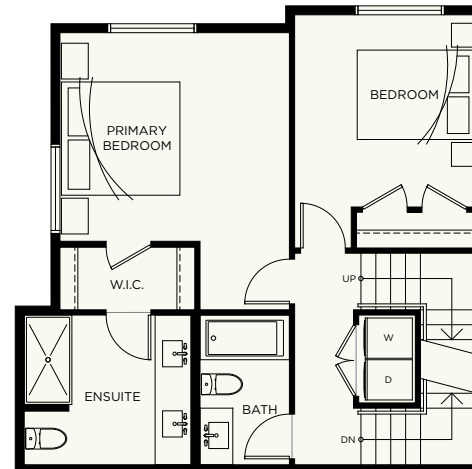
**ELWYNN GREEN**  
FLEETWOOD



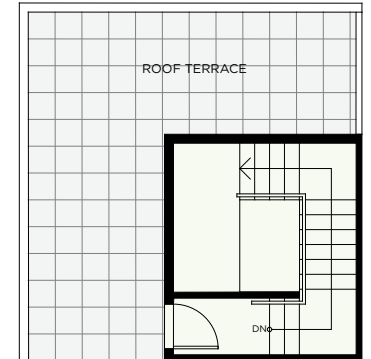
**LOWER LEVEL**



**MAIN LEVEL**



**UPPER LEVEL**



**ROOF DECK LEVEL**



# E6

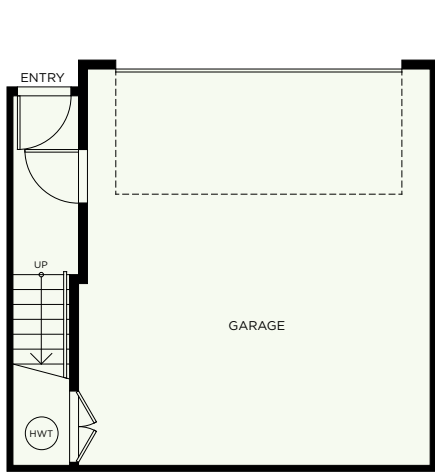
**3 BEDROOM**  
**2.5 BATH**

**INTERIOR** 1,422 SF  
**ROOFTOP** 139 SF  
**TOTAL** 1,561 SF  
**GARAGE** 459 SF

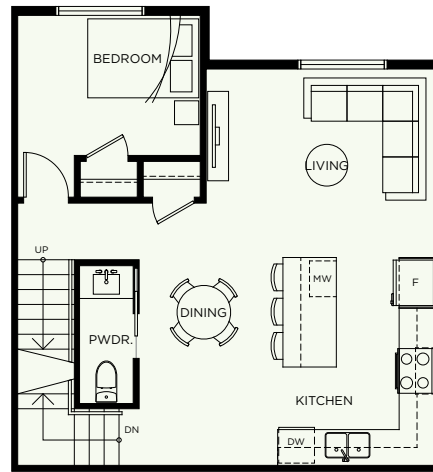


**ELWYNN GREEN**

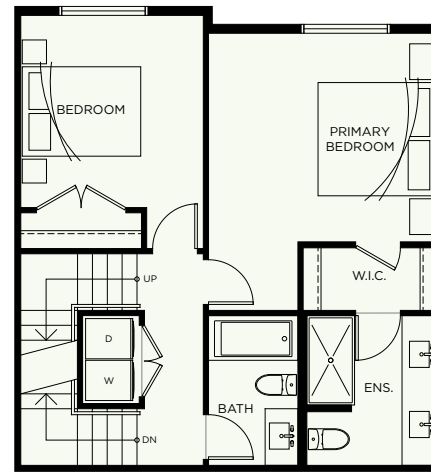
FLEETWOOD



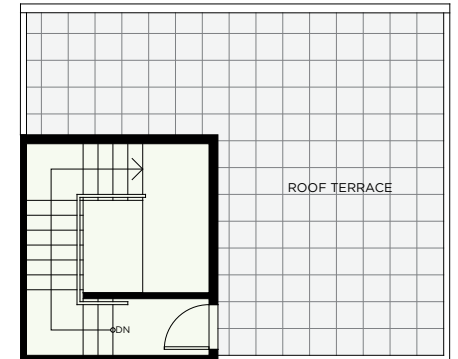
**LOWER LEVEL**



**MAIN LEVEL**



**UPPER LEVEL**



**ROOF DECK LEVEL**





# E7

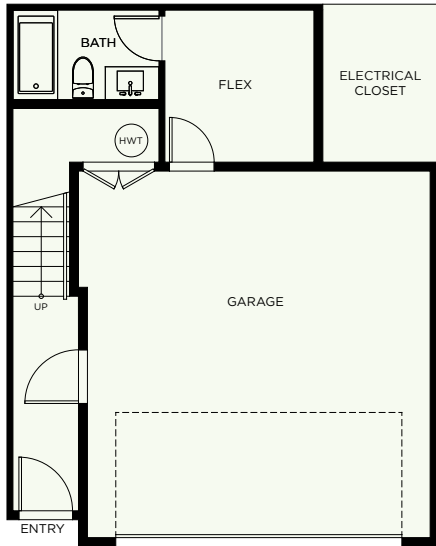
**3 BEDROOM**  
**3.5 BATH**

**INTERIOR** 1,931 SF  
**ROOFTOP** 139 SF  
**TOTAL** 2,070 SF  
**GARAGE** 427 SF

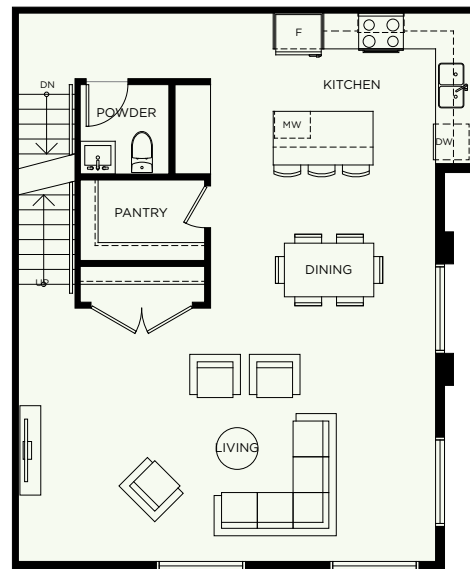


**ELWYNN GREEN**

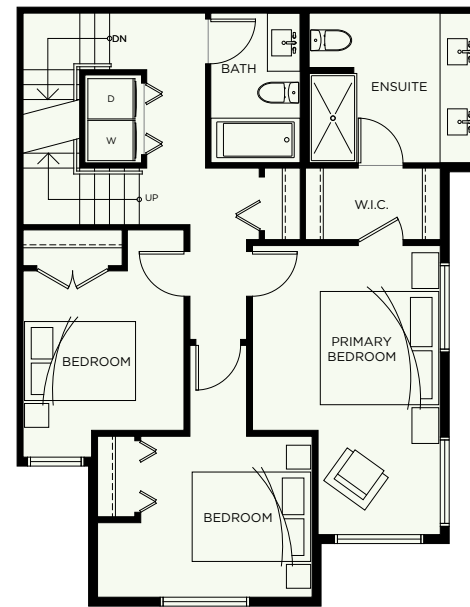
FLEETWOOD



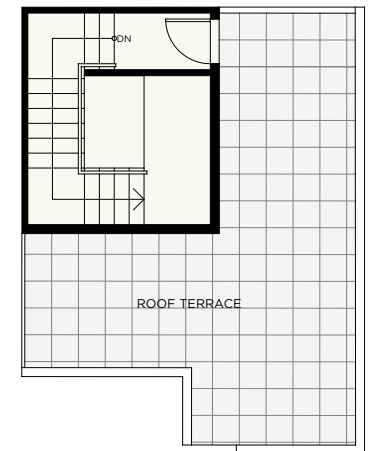
**LOWER LEVEL**



**MAIN LEVEL**



**UPPER LEVEL**



**ROOF DECK LEVEL**



# F

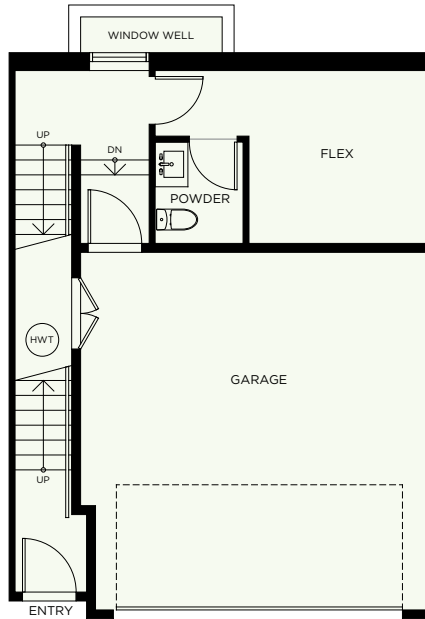
## 3 BEDROOM + FLEX 3.5 BATH

INTERIOR 1,871 SF  
DECK 52 SF  
TOTAL 1,923 SF  
GARAGE 408 SF

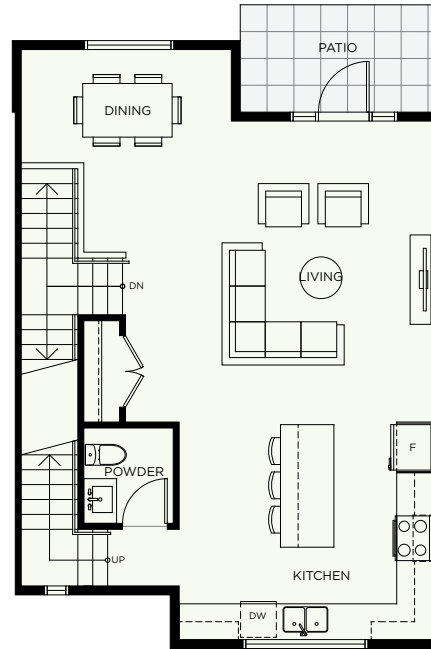


### ELWYNN GREEN

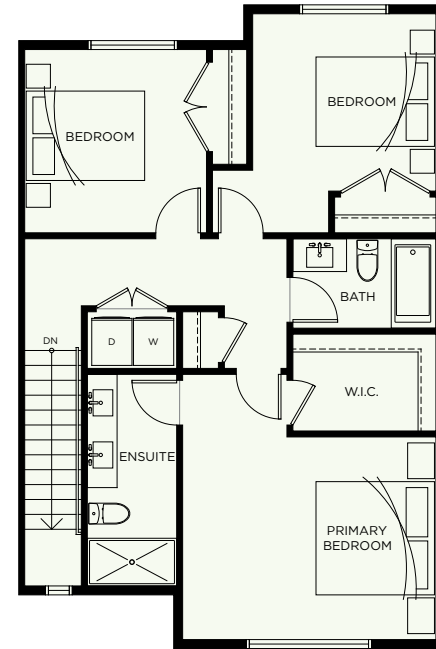
FLEETWOOD



LOWER LEVEL



MAIN LEVEL



UPPER LEVEL



# G

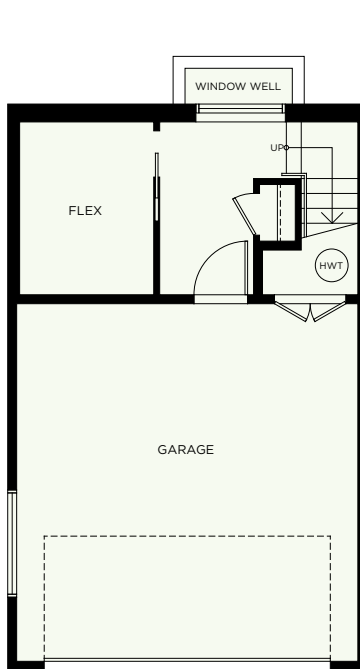
## 3 BEDROOM + FLEX 2.5 BATH

**INTERIOR** 1,531 SF  
**DECK** 52 SF (X2)  
**TOTAL** 1,635 SF  
**GARAGE** 413 SF

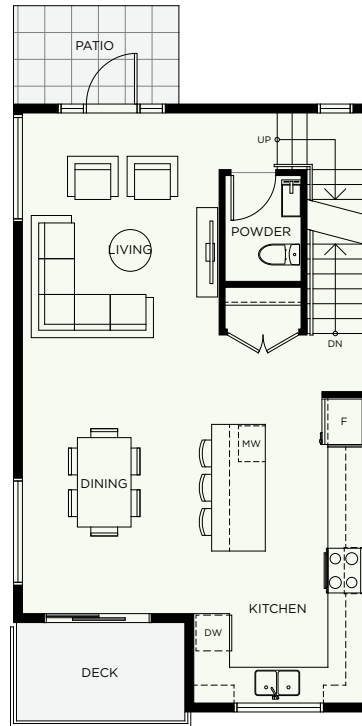


### ELWYNN GREEN

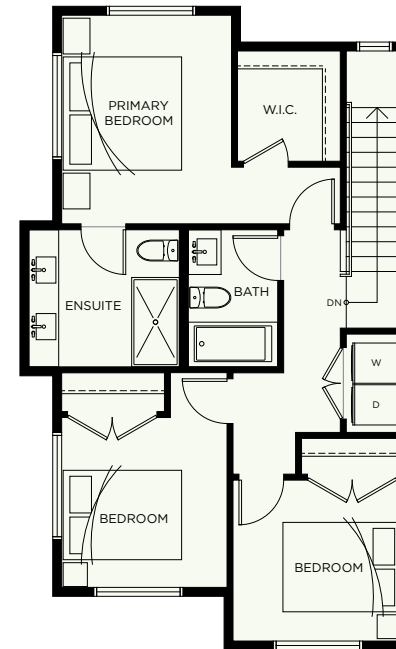
FLEETWOOD



LOWER LEVEL



MAIN LEVEL



UPPER LEVEL



# FEATURES AND FINISHES

## HIGHLIGHTS

- Spacious, private residences
- Rooftop decks with BBQ's & hot tub support (selected units)
- Fisher & Paykel + SAMSUNG appliance package
- Hot Water on demand
- Built-in security systems
- EV & AC ready
- High efficiency forced air heating
- Central vacuum system

## EXTERIORS

- Welcoming streetscape complements exquisite architecturally designed exteriors
- West coast contemporary architecture featuring dramatic roofs, cultured stone, rich wood accents and hardi-plank siding
- Enjoy outdoor living with spacious roof top patios
- Spacious patios have adequate room for both your patio lounge set as well as a large dining table
- Secure and spacious garages for two cars tandem or side-by-side parking with plenty of room for storage
- Scenic walkway
- Surrounded by 3 acres of lush green nature

## INTERIORS

- Two-tone cabinets (light and dark)
- High quality laminate flooring
- Contemporary roller blinds throughout
- Stylish black hardware, plumbing & lighting fixtures
- USB outlets in key locations – kitchen island, primary bedroom, ensuite & main bathroom
- RI portable vacuum charging station in laundry closet

## INTERIOR SCHEME SELECTIONS

- Monochromatic Dark and Light Schemes
- In each scheme, Scandinavian inspired wood is paired with neutral solid grey color
- Subtle countertops complement the cabinet finishes
- Graphic kitchen backsplash is carried through into the powder room as an accent wall
- Contrasting black hardware and lighting

## KITCHENS

- Two-tone cabinets
- Upper cabinets -solid colour, slim shaker profile
- Lower cabinets – timeless wood, modern flat panel
- Waterfall island feature
- Large scale graphic tile backsplash
- Tall accent cabinet with textured glass detail and lighting
- Accent pendant and under-cabinet lighting

## LIVING ROOMS

- 60" Linear electric fireplace
- Accent built-in cabinet with textured glass detail (ties in with kitchen)

## BEDROOMS

- Black-out roller blinds
- Walk-in closet (primary bedroom)
- Carpet flooring

## BATHROOMS (ENSUITE)

- Double vanity with undermount sinks
- Hidden drawer in recessed vanity toe-kick
- Hexagon marble floor tile
- Framed mirrors
- Solid colour slim shaker profile vanity cabinets
- Black hardware, plumbing & lighting fixtures
- Frameless glass shower enclosure

## ROOFTOPS

- Full-sized roof-top patio extends your living space and provides a perfect place to entertain
- Rooftops are hottub ready
- Convenient gas hookup for the BBQ

## MECHANICAL FEATURES

- Ample parking for guests
- HRV fan system that draws fresh outside air and living area air to be distributed to each bedroom
- Air conditioning roughed in
- On-demand hot water tank
- Quality Assurance Homes' Customer Care Program
- Hard-wired smoke and carbon monoxide detectors
- New Home Warranty coverage

### Home Warranty that includes:

- 2 Year Material & Labour Warranty
- 5 Year Building Envelope Warranty
- 10 Year Structural Defects Warranty